

# Weekly Report

2016 Week 2 (January 10 – January 06, 2016) through 2017 Week 2 (January 08 – January 14)

Department of Health and Human Services  
Division of Public and Behavioral Health  
Office of Public Health Informatics and Epidemiology



Brian Sandoval  
Governor  
State of Nevada

Richard Whitley, MS  
Director  
Department of Health and Human Services

Cody L. Phinney, MPH  
Administrator  
Division of Public and Behavioral Health

John DiMuro, DO, MBA  
Chief Medical Officer  
Division of Public and Behavioral Health

*February 2017  
Edition 1.0*

Data for the graphs and tables on the following pages are provisional and may be updated as additional information becomes available.

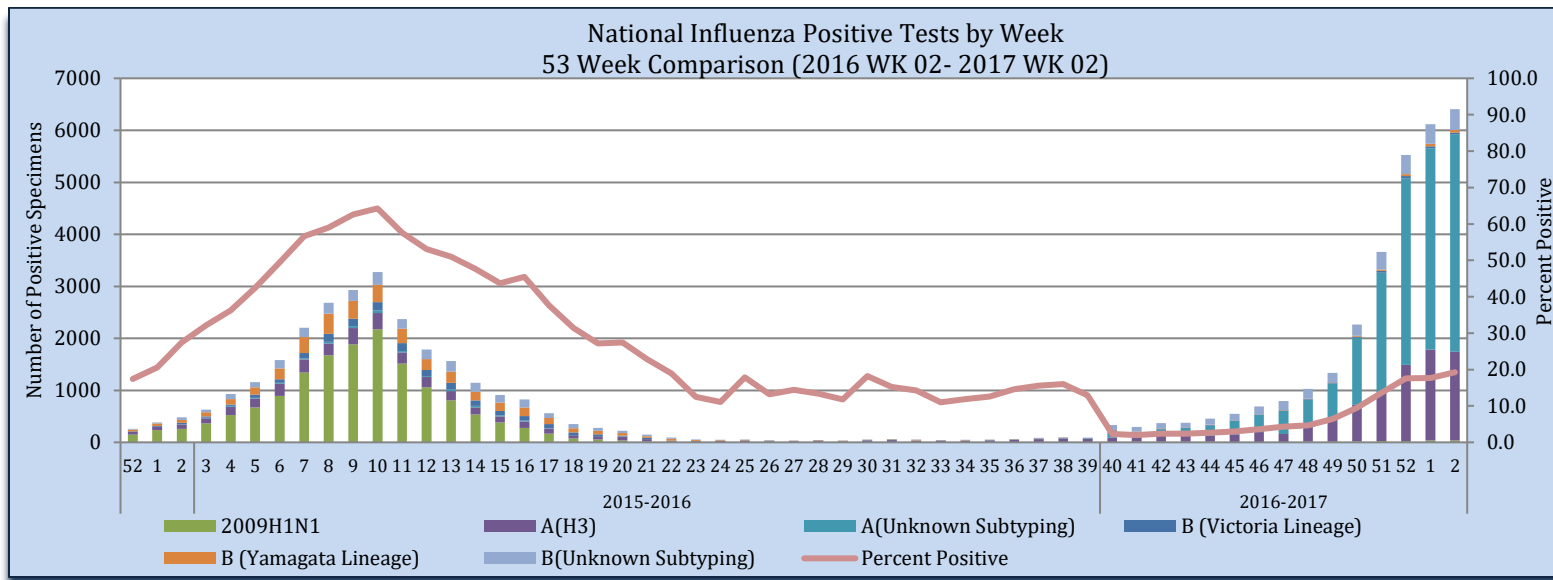
## Purpose

The purpose of this report is to provide an overview of and statistics for the influenza season in Nevada for the local public health authorities, sentinel providers and the public.

## Sentinel Provider Data: Influenza-Like Illness Network Surveillance (ILINet)

Respiratory specimens are tested for influenza by the World Health Organization (WHO) and National Respiratory and Enteric Virus Surveillance System (NRVESS) collaborating laboratories by sub-type. During week 02, there were 33,222 specimens collected and tested for influenza, of those 6,407 were positive (19.3%).

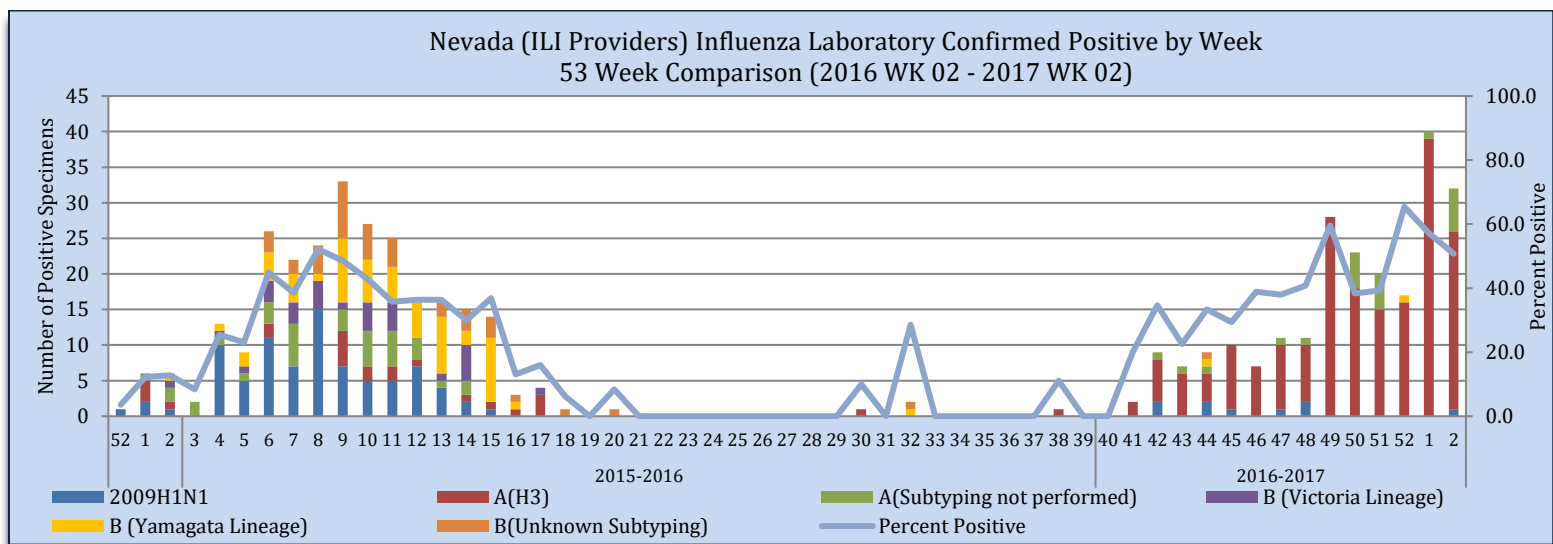
Figure 1



Source of Data: CDC: FluView Weekly Report.

The Nevada total includes laboratory tests for all Nevada residents tested by sentinel providers including out of state laboratories. During week 02, there were 63 specimens collected and 32 were positive (51%). There is a two week delay for laboratory surveillance.

Figure 2



Source of Data: CDC: ILINet.

Nevada State Public Health Laboratory (NSPHL) has tested 228 specimens for influenza from sentinel providers, of which there have been 196 positive (86%). Southern Nevada Public Health Laboratory (SNPHL) has tested 38 specimens this season of which there have been 2 positives. Nationally, there have been 326,213 specimens sent to the WHO and NERVSS laboratories of which 30,194 have been positive (9.03%). The national numbers in Table 1 are reflected in Figure 1. The state of Nevada data in Table 1 is reflected in Figure 2. The Nevada total includes laboratory test for all Nevada residents tested by sentinel providers, including out of state laboratories.

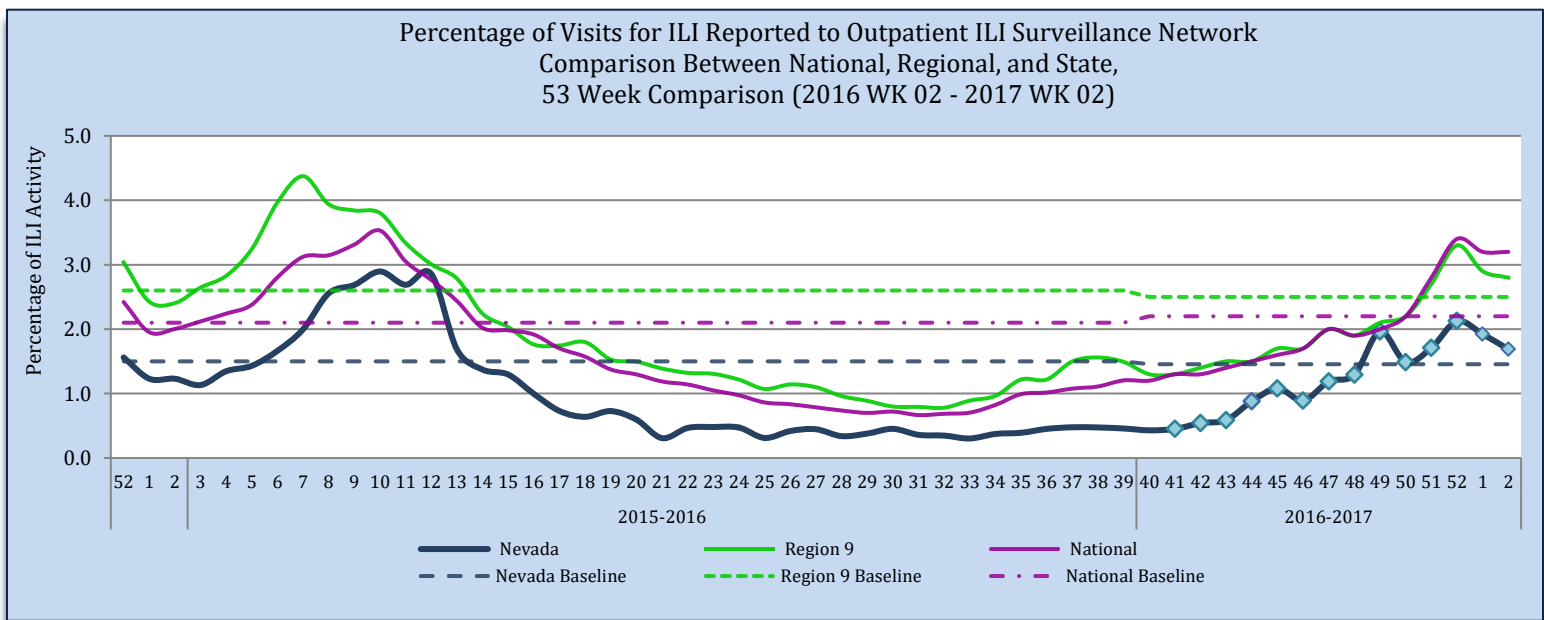
Table 1

	Influenza Specimens Tested State and Nationally through Sentinel Providers										
	NSPHL	SNPHL	All Other Laboratories	State of Nevada (Week 02)		State of Nevada (Season)		National (Week 02)		National (Season)	
				#	%	#	%	#	%	#	%
Specimens Tested	228	38	261	63		527		33,222		326,213	
Influenza Positives	196	2	28	32	50.8	226	42.9	6,407	19.3	30,194	9.03
<b>Influenza A:</b>	195	2	26	32	100	223	98.7	5,927	92.5	26,720	88.5
A (2009 H1N1)	8	0	1	1	3.1	9	4	36	0.6	240	0.9
A (H3)	187	2	3	25	78.1	192	86.1	1,707	28.8	8,349	31.2
A (Sub-typing not performed)	0	0	22	6	18.8	22	9.9	4,184	70.6	18,131	67.9
<b>Influenza B:</b>	1	0	2	0	0.0	3	1.3	480	7.5	3,474	11.5
B (Victoria Lineage)	0	0	0	0	0.0	0	0.0	32	6.7	251	7.2
B (Yamagata Lineage)	1	0	1	0	0.0	2	66.7	48	10	214	6.2
B (Sub-typing not performed)	0	0	1	0	0	1	33.3	400	83.3	3,009	86.6

Source of Data: CDC: FluView Report and CDC: ILINet.

Influenza-like Illness (ILI) Surveillance Network has each sentinel provider report the number of patients seen that meet the ILI case definition and the total number of patients seen for any reason each week. The “percentage of visits for ILI” is the number of ILI patients divided by the total number of patients visit per week. Nevada’s percentage of ILI visits for week 02 is 1.7% which is above the state baseline of 1.5%. Region 9 ILI percentage for week 02 is 2.8% which is above the region baseline 2.5%. Region 9 includes the following states/territory: Arizona, California, Guam, Hawaii, and Nevada. The national ILI percentage for week 02 is 3.2% which is above the national baseline 2.5%.

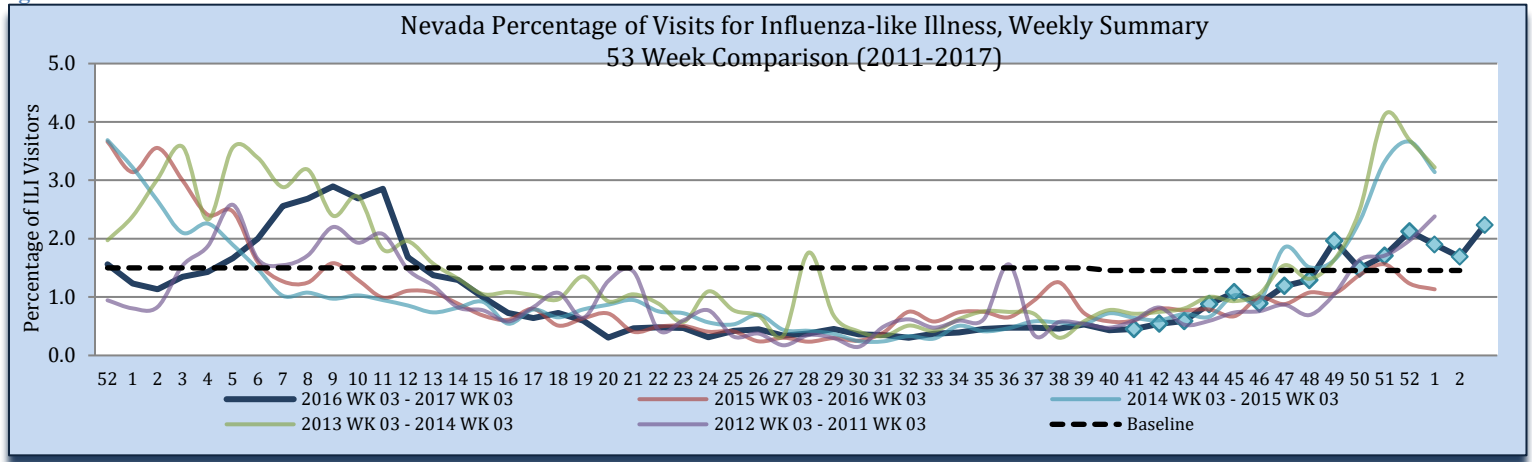
Figure 3



Source of Data: CDC: Flu View Report and CDC: ILINet.

During week 02, 1.7% of visits to sentinel providers were due to ILI; this is higher than the 2015-2016 influenza season (1.1%). There were 17,122 patients seen by sentinel providers during week 02, of which 289 patients presented with ILI; week 02 of 2016, there were 197 patients seen with ILI (17,398 total patients seen).

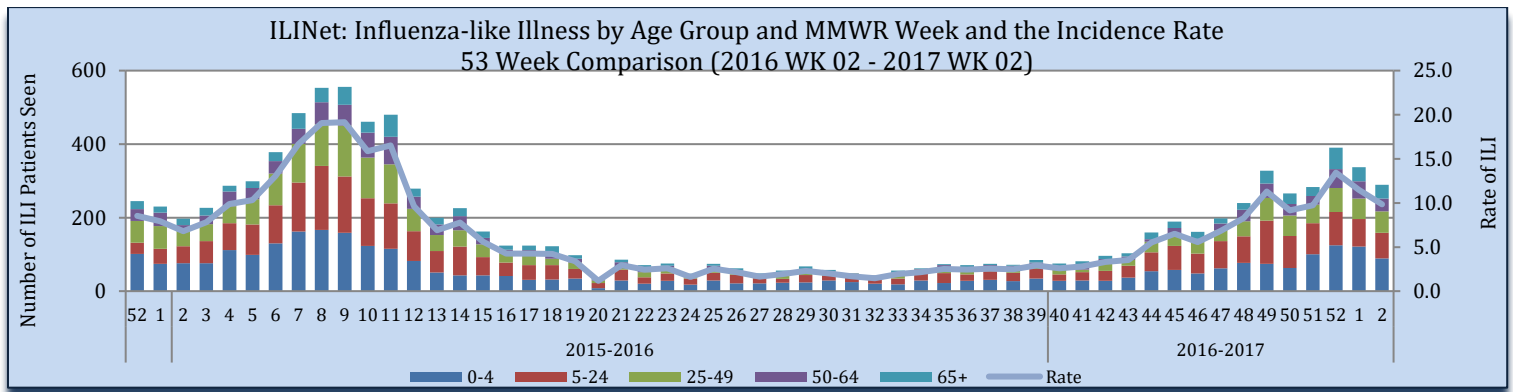
Figure 4



Source of Data: CDC: ILINet.

Influenza-like Illness is reported by age groups. During week 02, patients age 0-4 were the greatest number of patients seen with ILI, at 89 patients seen. The rate for week 02 is 9.8 per 100,000 population. The rate is calculated by the number of patients presented with ILI, divided by the state population, multiplied by 100,000. The estimated state population for 2017 is 2,935,490.

Figure 5



Source of Data: CDC: ILINet.

### Influenza Positive Surveillance (NBS and NETSS)

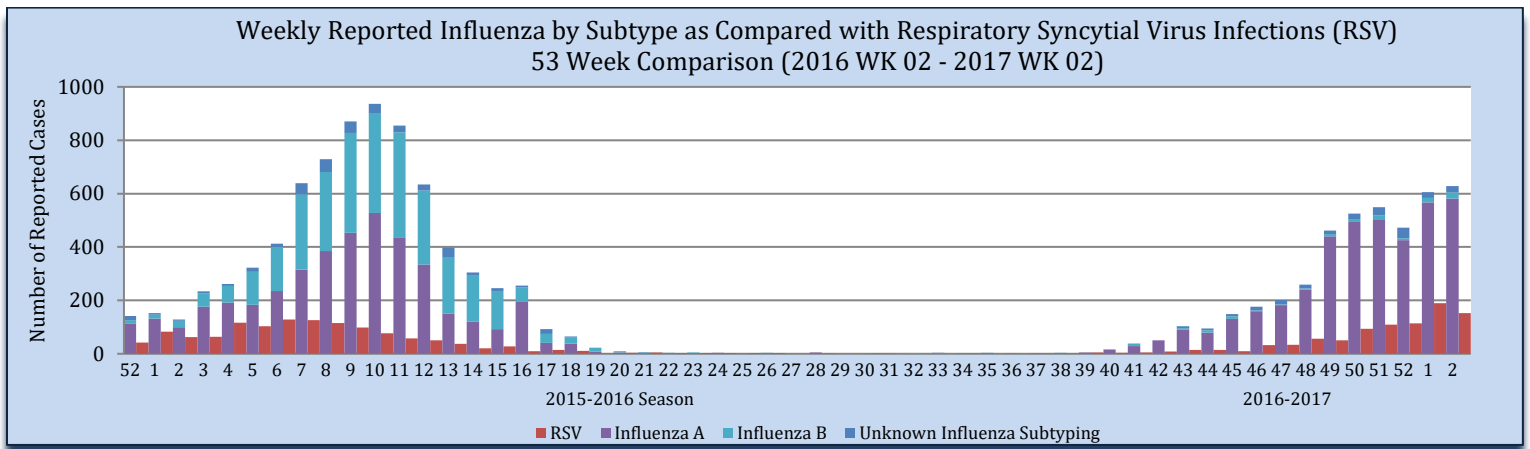
Positive cases of influenza are reported to the state health authority for surveillance purposes. Table 2 and Figure 6 reflect all positive influenza cases reported to the state. Types of influenza testing include commercial rapid diagnostic test (rapid), viral culture, fluorescent antibody, enzyme immunoassay, RT-PCR (PCR), and Immunohistochemistry. The two most common test types in Nevada are Rapid and PCR tests. During week 02, there were 628 influenza cases reported to the state, 581 influenza A, 23 influenza B and 24 unknown subtyping.

Table 2

Reporting Jurisdiction	Reported Influenza Cases by County Jurisdiction and Influenza Type							
	Current Week (Week 02)				Cumulative Influenza Season			
	A	B	Unknown	Total	A	B	Unknown	Total
Carson City Health and Human Services	71	2	0	73	656	2	2	660
Rural Community Health Services	38	0	5	43	340	12	18	370
Southern Nevada Health District	374	18	13	405	1,387	78	86	1,551
Washoe County Health District	98	3	6	107	1,604	33	114	1,751
State of Nevada	581	23	24	628	3,987	125	220	4,332

Source: OPHIE: NBS and SNHD: NETSS.

Figure 6



Source of Data: OPHIE: NBS and SNHD: NETSS.

### Hospitalizations

There were 31 hospitalization associated with influenza reported to the state health authority for week 02.

Table 3

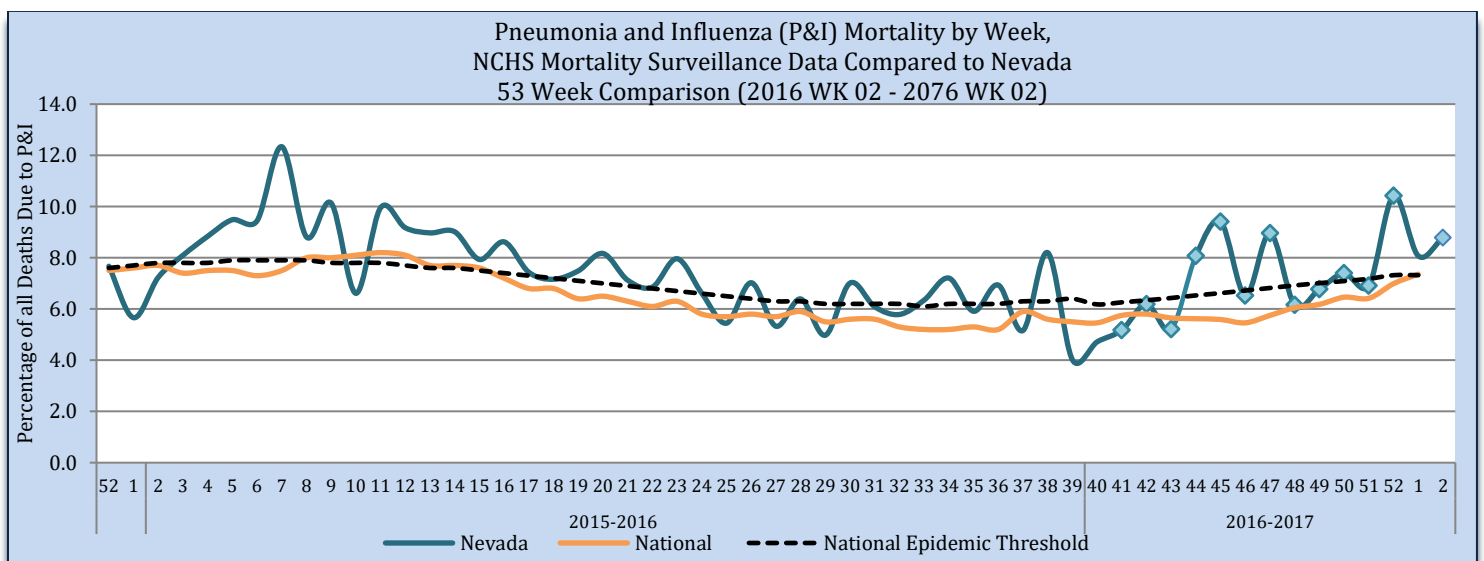
Reporting Jurisdiction	Influenza Hospitalizations			
	Current Week (Week 02)		Cumulative Influenza Season	
	#	%	#	%
Carson City Health and Human Services	9	29	27	7.8
Rural Community Health Services	0	0.0	4	1.1
Southern Nevada Health District	8	25.8	94	27
Washoe County Health District	14	45.2	223	64.1
State of Nevada	31	100	348	100

Source: Reported to Office of Public Health Informatics and Epidemiology from each Jurisdiction.

### Pneumonia and Influenza (P&I) Mortality Surveillance

The Pneumonia and Influenza (P&I) mortality percentage is all deaths, where Pneumonia or Influenza is listed as the underlying or contributing cause of death, divided by the total deaths in Nevada for each week. As of January 30<sup>th</sup>, there were 39 P&I deaths and 444 total deaths for week 02 in Nevada. Nationally, the P&I mortality percent has not been published for week 02.

Figure 7



Source: OVR: WEVRRS and CDC: FluView.

### Technical Notes

- Data are subject to changes, additionally, there is a lag in reporting.
- Influenza surveillance procedures vary by jurisdiction.
- Influenza-like illness (ILI): a fever greater than or equal 100°F with cough and/or sore throat.
- Percent positive: The number of positive influenza laboratory tests divided by the total number of tests performed.
- Incidence rate is per 100,000 population as estimated by the state demographer.

This report contains information from national and state-level data sources. Influenza surveillance data is collected by a various systems, including:

- Influenza-like Illness Network (ILINet): a sentinel surveillance system in collaboration with the Centers for the Disease Control and Prevention (CDC) where outpatient providers report ILI information weekly.
- National Electronic Telecommunication System for Surveillance (NETSS): a system whereby data is transmits to CDC. Influenza data collected through NETSS does not provide influenza sub-typing information.
- National Electronic Disease Surveillance System (NEDSS): a system for collecting data and monitoring disease trends and outbreaks.
- NEDSS Based System (NBS): an implementation of the NEDSS standards. It provides a secure, accurate, and efficient means of collecting, transmitting, and analyzing public health data.

### Citations

1. CDC. FluView: A Weekly Influenza Surveillance Report. <http://www.cdc.gov/flu/weekly/pastreports.htm>.
2. Nevada State Demographer's Office. 2003-2020 ASRHO Estimates and Projections. Division of Public and Behavioral Health edition. Vintage 2015.
3. OPHIE. DPBH. NBS. 2015-2017. Accessed January 2017.
4. Office of Vital Records (OVR). DPBH. Web Enabled Vital Records Registry System (WEVRRS) [unpublished data]. 2015-2017. Accessed January 2017.
5. Southern Nevada Health District (SNHD). NETSS/Trisano. 2015-2017. Accessed January 2017.

**Comments, suggestions, and requests for further information may be addressed to:**

**NEVADA INFLUENZA SURVEILLANCE PROGRAM  
OFFICE OF PUBLIC HEALTH INFORMATICS AND EPIDEMIOLOGY  
500 DAMONTE RANCH PKWY, STE 657  
RENO, NV 89521  
TEL: (775) 684-5289  
FAX: (775) 684-5999**

### Compiled and Written by:

Liliana E. Wilbert, MPH

### Reviewed by:

Jennifer Thompson  
Melissa Peek-Bullock

### Recommended Citation:

Division of Public and Behavioral Health. Office of Public Health Informatics and Epidemiology. Influenza Weekly Report, 2016 Week 02 (January 10, 2016) through 2017 Week 02 (January 14), Nevada. February 2017 i 02 edition 1.0.

This publication was supported by Cooperative Agreement Number TP000534-02 from the Centers for Disease Control and Prevention and/or Assistant Secretary for Preparedness and Response. Its contents are solely the responsibility of the authors and do not necessarily represent the official views of the Centers for Disease Control and Prevention and/or Assistant Secretary for Preparedness and Response.

